



H.O.P.E.

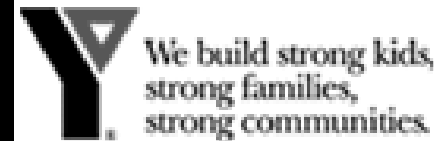
H - Helping

O - Other

P - People

E - Excel

Connections is the key to the program's success!



Contact Information

Toni Glasscoe

Director of K-12 Initiatives and Career Preparation

Email: glassct@lcc.edu

Phone: (517) 483-9909

Ieesha Perkins

H.O.P.E. Scholarship Program
Ombudsman

Email: perkinsi@lcc.edu

Phone: (517) 483-9663

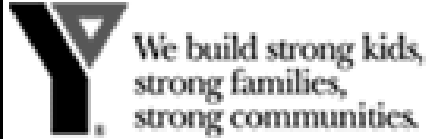
Al Nowak

Coordinator of K-12 Transitional
Programs

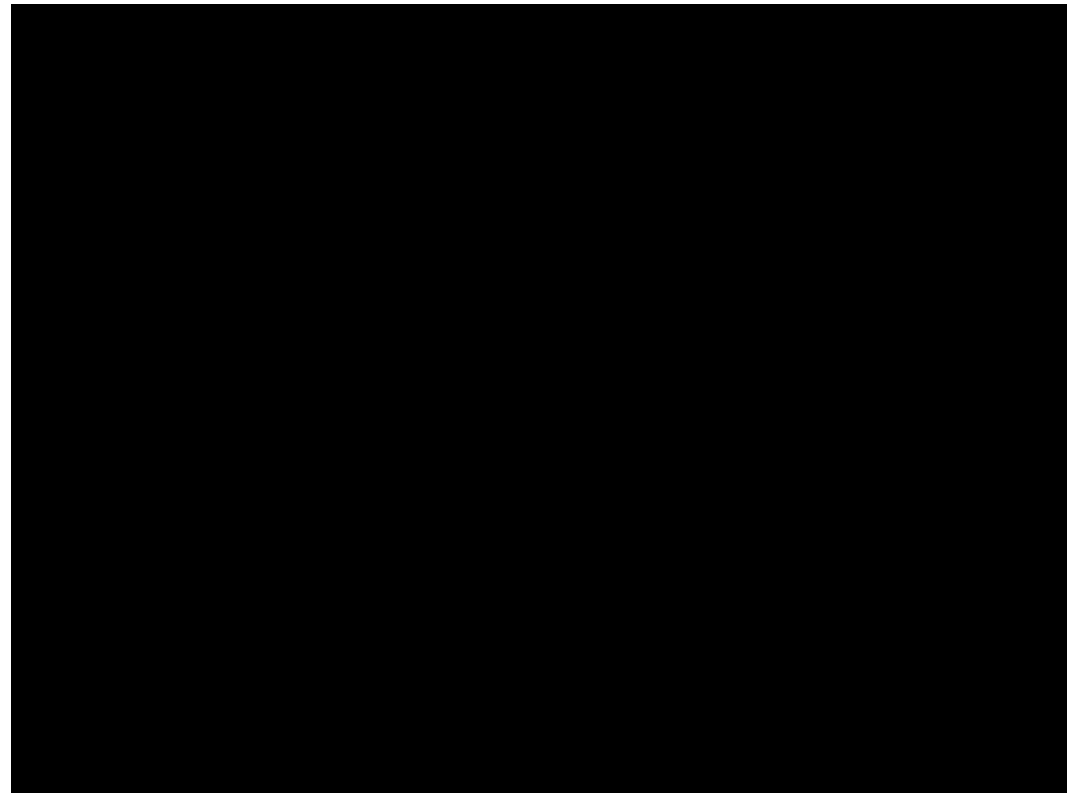
Email: nowaka@lcc.edu

Phone: (517) 483-9904

Connections is the key to the program's success!



H.O.P.E.



Connections is the key to the program's success!



IMPACT ON THE COMMUNITY

- ❖ Lowers criminal risk factors
- ❖ Reduces the unemployment rate
- ❖ Increases **HOPE** within parents, students and the community
- ❖ The program is self-supporting, insuring no financial strain for the community or the family

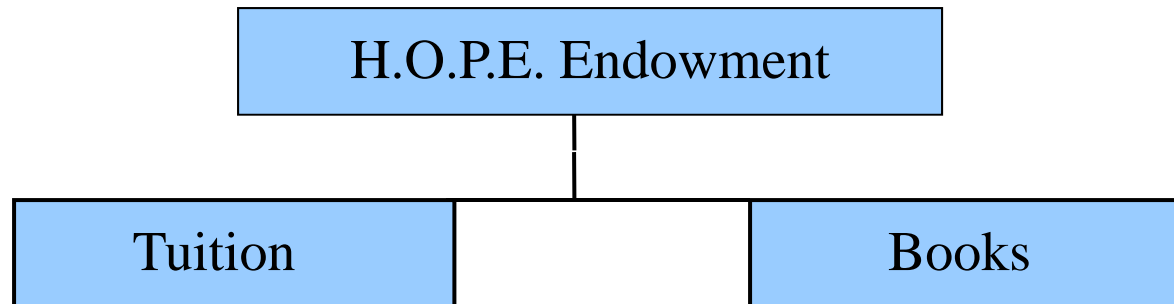
OVERALL H.O.P.E. MAKES LANSING A BETTER PLACE TO LIVE,
WORK AND ATTEND SCHOOL

Connections is the key to the program's success!



2001 Funding Goal

Goal: \$2.5 Million Over 3 to 5 Years



H.O.P.E. was launched in 2001 and \$3 million was raised for the scholarship endowment!

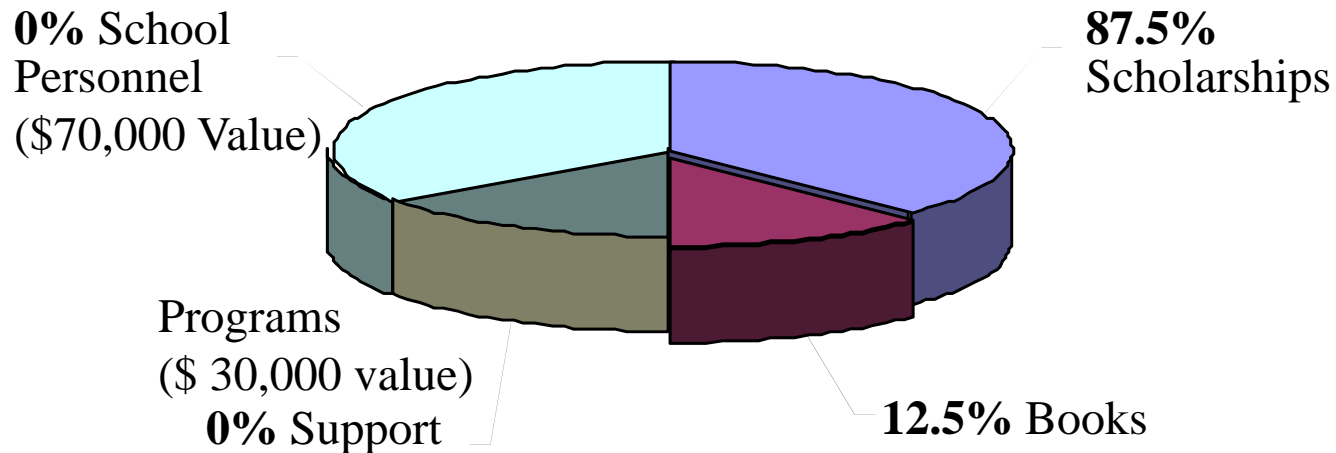
The H.O.P.E. program is financed through private donations and grants solicited by program personnel.

Connections is the key to the program's success!



Distribution of Funds

Half of the program costs are donated by the Lansing School District and Lansing Community College



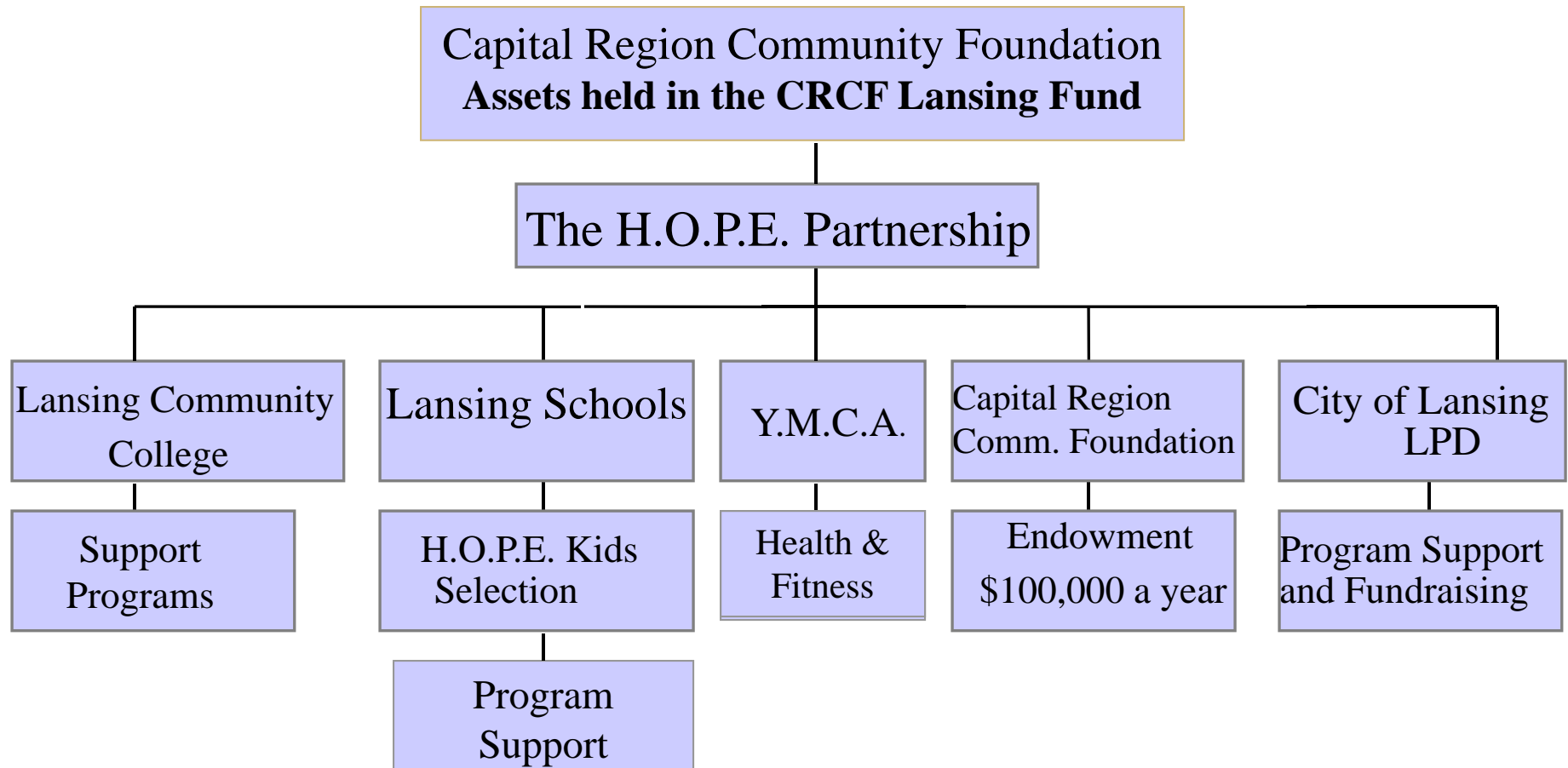
The H.O.P.E. Program would cost approximately \$100,000 each year, including all estimated costs. Actual scholarships will cost approximately \$87,500. Cost of books is approximately \$12,500.

Support Programs and support personnel will be donated by LSD and LCC.

Connections is the key to the program's success!



The Power of Partnerships!



Connections is the key to the program's success!



H.O.P.E. Scholarship Distribution

- 3,500 H.O.P.E. scholarships awarded to date
- 500 new scholars being inducted yearly
- Students promise to finish high school in exchange for two years of free college tuition at LCC

Connections is the key to the program's success!



Eligibility Considerations

- ❖ Student's eligibility to participate in the Free and Reduced Lunch Program
- ❖ Academic status
- ❖ Financial constraints
- ❖ Foster children
- ❖ Self-esteem factors
- ❖ Single parent family
- ❖ Enrolled in an at risk program at school

THIS IS A NEED BASED SCHOLARSHIP

Connections is the key to the program's success!



H.O.P.E. Connections

H.O.P.E. promises to provide a support network for all 'H.O.P.E. Kids.' The Connections are the key to the program's success.

1. Academic-Based Support Network
2. Activity-Based Support Network

Connections is the key to the program's success!



How Connection Dollars Will Be Spent

\$400,000 Permanent endowment held at CRCF	
Academic-based support network	\$ 13,000
Activity-based support network	<u>\$ 3,000</u>
TOTAL	*\$ 16,000

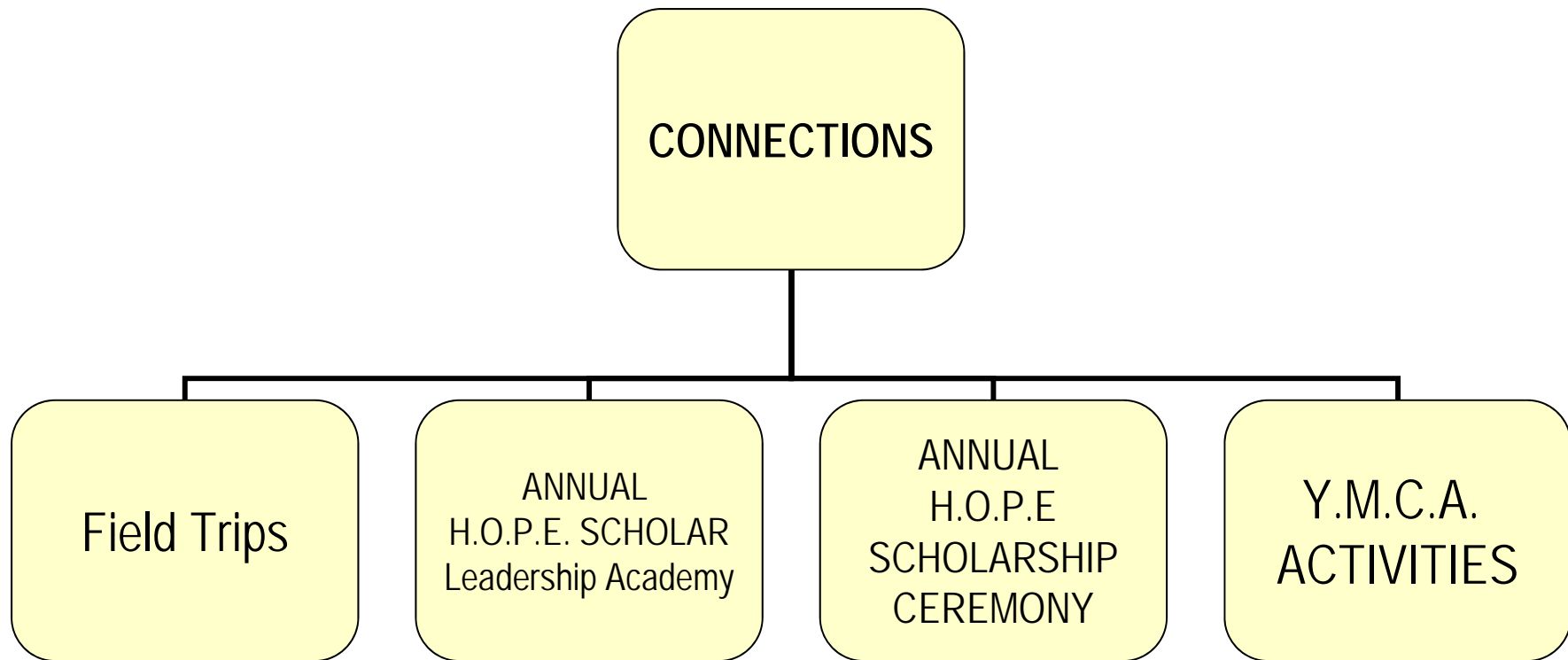
To date, \$283,397.74 has been raised to support H.O.P.E. Connections.

*\$16,000 return is based upon a 4% annual growth in the permanent endowment

Connections is the key to the program's success!



ACTIVITY-BASED SUPPORT NETWORK



Connections is the key to the program's success!



ACADEMIC-BASED SUPPORT NETWORK

<i>Program</i>	<i>Dates</i>	<i>Grade(s)</i>	<i>Cost</i>	<i># of Students</i>
PSAT Survey Course	September/October	11 th	\$110	28
ACT Survey Course	Nov/Jan/Feb/Mar	9 th - 12 th	\$110	24
Girls' Math/Science Conference in The Greater Lansing Area	February	6 th	\$30	26
MASCOT	June/July	7 th	\$225	10
Dimensions	June/July	7 th - 8 th	\$425	10
TOTAL			\$13,000	98

Connections is the key to the program's success!



H.O.P.E. Graduation Rate

At the end of the 2007-08 academic year:

- ❖ 186 of 194 Lansing School District H.O.P.E. Scholar Seniors graduated with a regular diploma (96%).
- ❖ This was 6.8% higher than for Non-H.O.P.E. seniors.
- ❖ The number of H.O.P.E. seniors who did not graduate was 7% lower than Non-H.O.P.E. seniors. (LSD, 2009)

Connections is the key to the program's success!



H.O.P.E. Grade Point Average

At the high school level, there is a smaller proportion of H.O.P.E. Scholar students with a grade point average less than 2.00 (33%) versus non-H.O.P.E. students (43%). (LSD, 2009)

Connections is the key to the program's success!



H.O.P.E. vs. Comparison Group Suspension Analysis

The suspension rates peak at grades 8 and 9 for both H.O.P.E. and Comparison Cohort groups.

- ❖ The suspension rates for students in the first HOPE class decreased by more than 10%, down from 29% seven years prior. (LSD, 2009)

Connections is the key to the program's success!



Assumptions

- ❖ 50% of H.O.P.E. kids (250) will complete high school
- ❖ 50% of those graduates (125) will attend Lansing Community College
- ❖ 80% of these students (100) will qualify for grants
- ❖ The remaining 25 scholarships will need to be funded through the H.O.P.E. endowment

Connections is the key to the program's success!



Transition to LCC

- Senior Admitting to LCC
- Assessment Test Preparation
- Financial Aid Assistance
- Academic Orientation and Advising
- Fall Kickoff

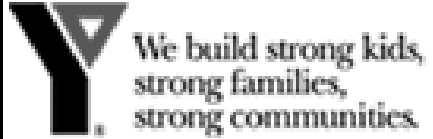
Connections is the key to the program's success!



H.O.P.E. by the Numbers at Lansing Community College 2008 – 2009

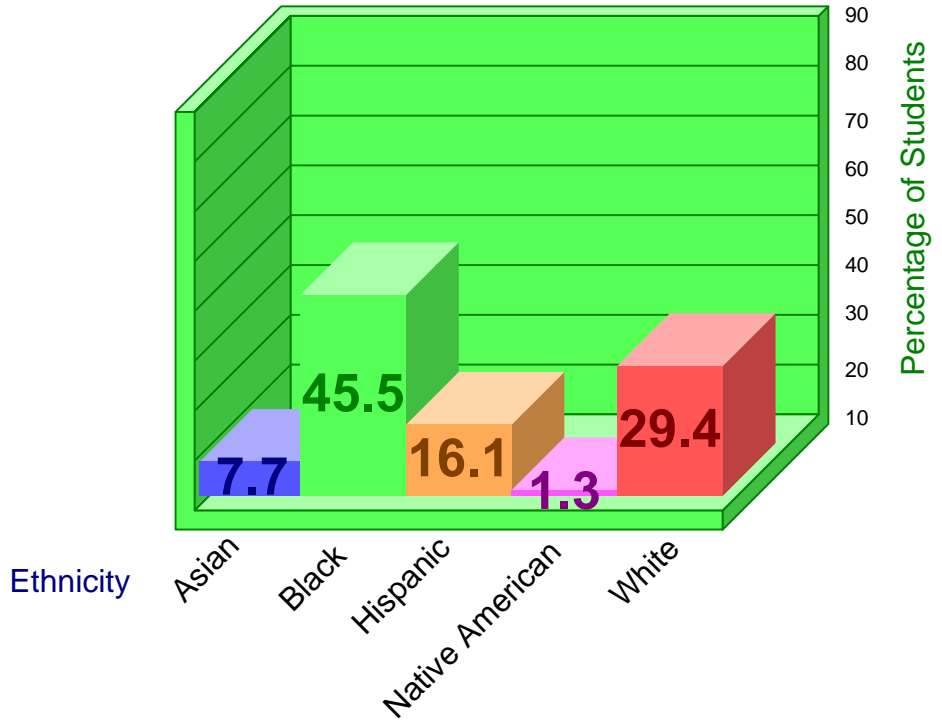
- Of the 477 H.O.P.E. Scholars in the first cohort, 198 admitted to LCC and 143 total students enrolled.
- Of the 143 students enrolled, 129 graduated from Lansing School District.

Connections is the key to the program's success!



First Cohort By Ethnicity

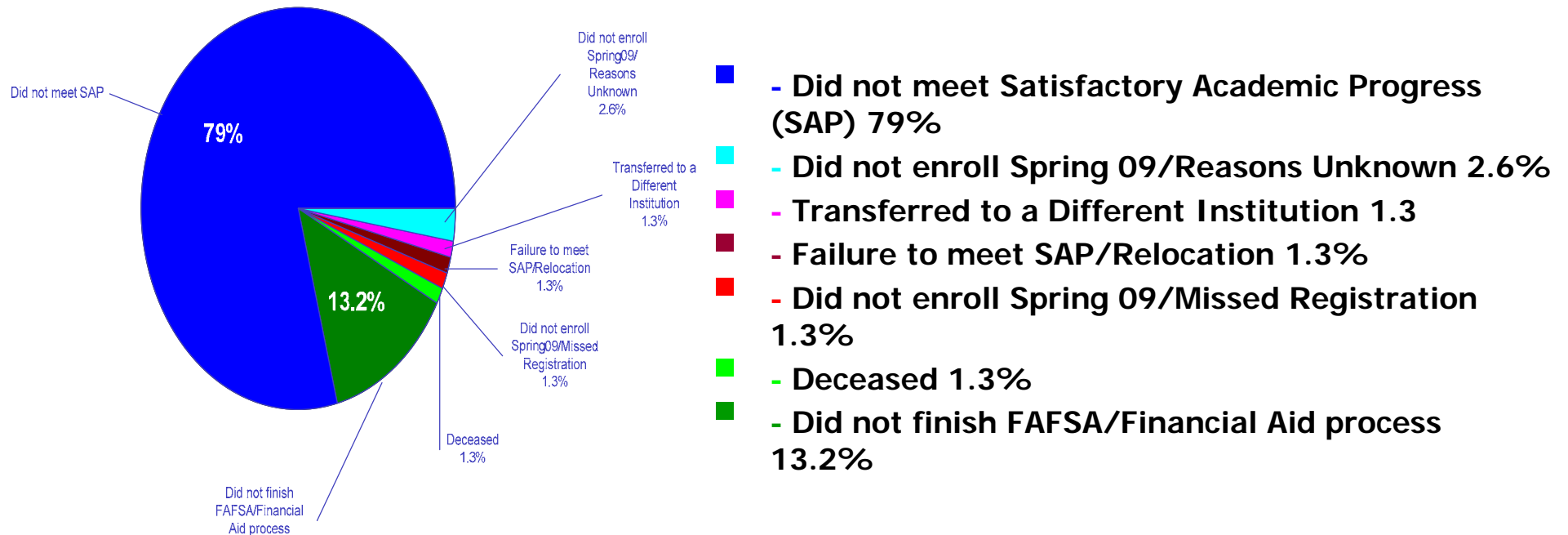
HP1 H.O.P.E. Scholars by Ethnicity



Connections is the key to the program's success!



Total Number of H.O.P.E. Scholars Not Continuing After 2008-2009



Connections is the key to the program's success!



H.O.P.E. by the Numbers cont. 2008-2009

Average cost to attend Lansing Community College per student for two semesters:

- \$1,900 tuition and fees
- \$1,000 books
- Total cost for two semesters = \$2,900

Connections is the key to the program's success!



H.O.P.E. by the Numbers cont. 2008-2009

- A total of 83 students were awarded either full or partial HOPE funding.
- Bill for tuition & fees was \$51,149
- Bill for books was \$27,569
- Total bill for first semester was \$78,718
- Total bill for second semester was \$63,193

Connections is the key to the program's success!



Assumptions vs. Reality

- 143 HOPE students enrolled at LCC as compared to the assumption of 125.
- 83 students needed HOPE dollars for their education, compared to 25.
- \$50,000 was budgeted for the first year. The cost was **\$141,911**.

Connections is the key to the program's success!



Cost Intervention Steps

- ❖ Lansing Community College has hired Ieesha Perkins as the HOPE Ombudsman to coordinate the completion of the college financial aid and scholarship processes.
- ❖ The Ombudsman will also coordinate book retrieval process for reuse of books bought with HOPE funds.
- ❖ Lansing School District has pledged their staff's help in completing the financial aid forms for the HOPE students.

Connections is the key to the program's success!



H.O.P.E. Senior Survey 2008-2009

A survey was given to H.O.P.E. seniors at all 4 high schools. The question asked was:

“Overall, do you feel that the program was beneficial to your development?”

Connections is the key to the program's success!



Responses

- ❖ It gave me more inspiration to stay in school.
- ❖ Without this program I wouldn't be going to college.
- ❖ It gives me H.O.P.E. that I can achieve my goals.
- ❖ It was beneficial to me because it helped me stay focused on my schooling.
- ❖ It pushes people to be successful and have faith in yourself no matter what you do. But I'm chosen, I'm here for a reason.

Connections is the key to the program's success!



Lessons Learned

- Development of processes and procedures are essential for success.
- Communication of college requirements, deadlines, student expectations, and responsibilities must be developed prior to students attending college.
- Students and families must be aware of their responsibilities and communication is essential.
- Greater Collaboration

Connections is the key to the program's success!



Next Steps

- ❖ Lansing Promise
- ❖ Spin off programs
- ❖ Beyond LCC

Connections is the key to the program's success!



Questions and Answer

☀ Thank you for attending

Connections is the key to the program's success!