

Process Used to Select Technical Skills Assessments for Michigan CTE Programs



Dr. Jill C. Kroll, Research Consultant

Carol Clark, Program Consultant

Norma Tims, Program Consultant

February 2, 2010



Presentation Overview


- Background: Legislative requirements
- Test selection process
- Test development process
- “New” information
- Opportunity for questions and comments



Carl D. Perkins Act Of 2006

Sec 113 Accountability

- Establishes state and local accountability system
- To assess the effectiveness of recipients in achieving progress in CTE
- To optimize the return on investment of Federal Funds in CTE



Sec 113(b)2ii requires:

...student attainment of career and technical skill proficiencies, including student achievement on technical assessments that are aligned with industry recognized standards, if available and appropriate.



2 S1 CPI Requirement

Sec 113(b)2B(i): (CPI)

Recipients must measure, using valid and reliable measures :

- Student attainment of challenging CTE skill proficiencies, including student achievement on technical assessments, that are aligned with industry-recognized standards, if available and appropriate.

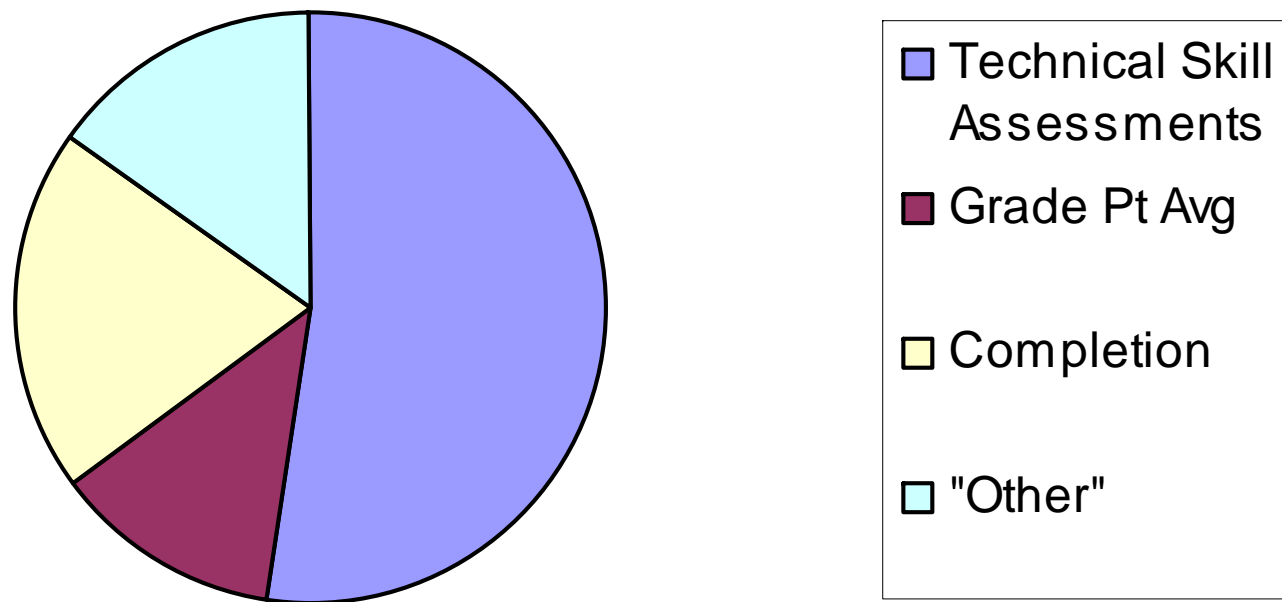


Permissible use of funds

- Sec 124(C)14: State Leadership Activities may include developing valid and reliable assessments of technical skills.

National Approaches

State approaches to providing Data on CPI 2S1



Assessment Selection Process





Background

- Study by Southern Regional Educational Board (SREB)
“Measuring Technical and Academic Achievement: Employer/Certification Examinations Role in High School Achievement”

Available: www.sreb.org



Background: SREB study

- Purpose of study: Review of the quality, content and rigor of external examinations relevant to CTE
- Developed set of criteria for reviewing and recommending examinations



Essential Criteria (SREB study)

- Examination is—
 - Standardized
 - Independently Graded
 - Knowledge-based
 - Administered nationally or internationally



Essential Criteria (SREB study)

- Examination—
 - Results in recognized credential
 - Results are available immediately
 - Cut scores set using standards-setting process
 - Represents employer relevance
 - Sufficiently linked with academic subjects



OCTE selection process

- Continuous review and refinement:
 - New information from OVAE
 - Experience
 - New information from other states
 - Changing Resources



Selection Process: Key Elements

Identify Existing Assessment



Appropriate Content?

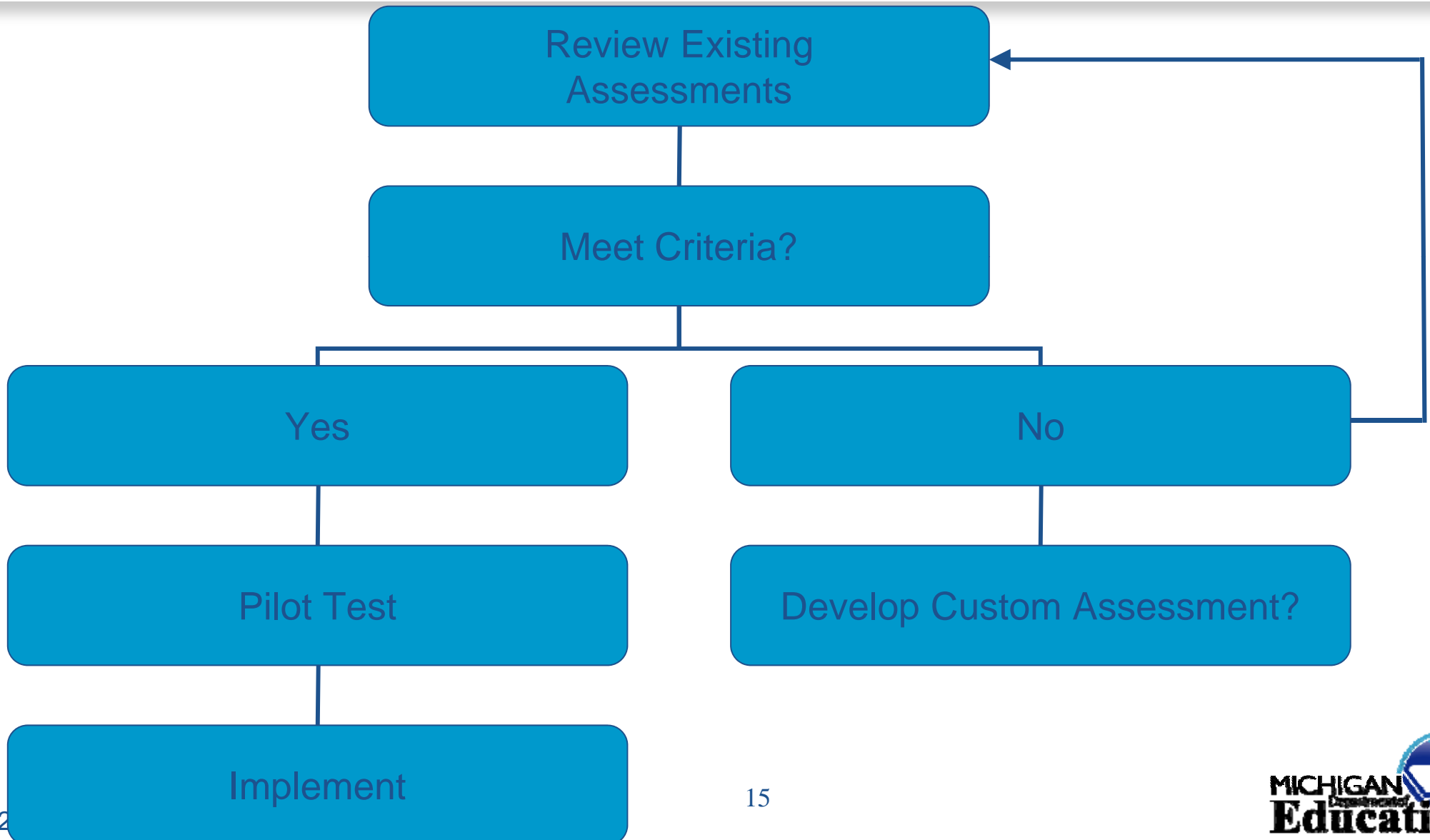


Feasible?



Reliable/Valid?

Selection Process





Assessment Selection

- Criteria still being refined.
 - Appropriate measure for secondary program?
 - Cost
 - Feasible to administer?
 - Scores available?
 - Reliable and Valid?



PREFERRED:

- Identify existing assessments:
 - National assessment
 - Industry-recognized credential
 - Reliable and valid
 - Affordable
 - Scores available



Development Process

- Cluster advisory group
- Assessment and Accountability Advisory Group
- Statement of Work developed
- Review of proposals



Development Process

- Content definition: Prioritize standards
- Test Specifications/Test Blue Print



Item Development

- Identify item-writers (instructors)
- Train item-writers
- Item-Writing workshop
- Review items
- Revise items
- Item Bias Review



Pilot Testing

- Pre-Pilot (small group/informal)
- Revise assessment
- Identify pilot test sites
- Main Pilot test (Field test)
- Reliability/Validity Analysis
- Revise Assessment



Prepare Test Form(s)

- Design test form (with assessment delivery source)
- Prepare administration instructions
- Assessment reviewed:
 - Cluster Advisory Group
 - Assessment & Accountability Advisory Group
- Test form approved



Set Cut Score

- Identify cut score setting group
 - Postsecondary, secondary, business/industry
- Hold cut score setting meeting
- Analyze data
- Committee recommends cut score to OCTE
- OCTE recommends cut score to State Board
- State Board approves assessment and cut score



Implementation

- Assessment entered into online assessment system
- Deliver assessment
- Evaluate assessment and process:
 - Student, Teacher, Proctor evaluations



Cluster Advisory Groups

- Employer partners
- Postsecondary educators
- Secondary educators
- Cross-section of state
- CEPD Administrator
- Member of Assessment & Accountability Advisory Group



Assessment & Accountability Advisory Group

- CEPD Administrators
- District Assessment, Evaluation, Measurement staff
- Postsecondary representatives
- OCTE staff
- Community College Services Unit
- Off. of Education Assessment & Accountability

Questions?





Contact Us

- Dr. Jill C. Kroll, 517 241-4354
krollj1@michigan.gov
- Carol Clark, 517 241-4355
clarkc7@michigan.gov
- Norma Tims, 517 241-2091
timsn@michigan.gov