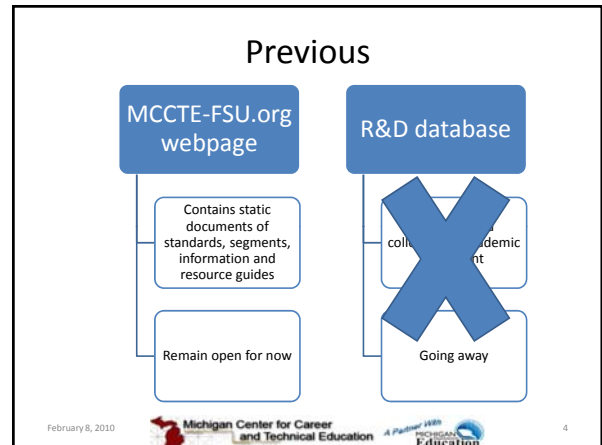
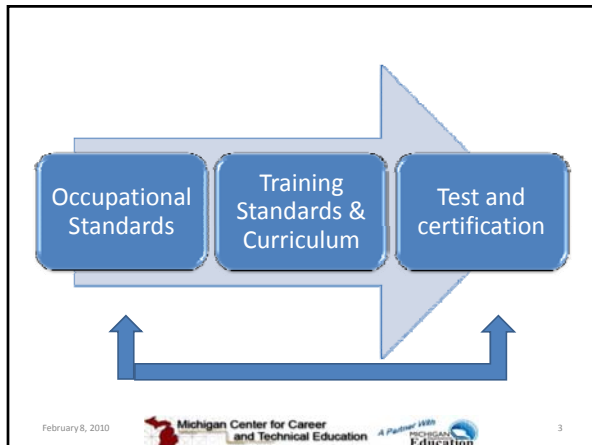
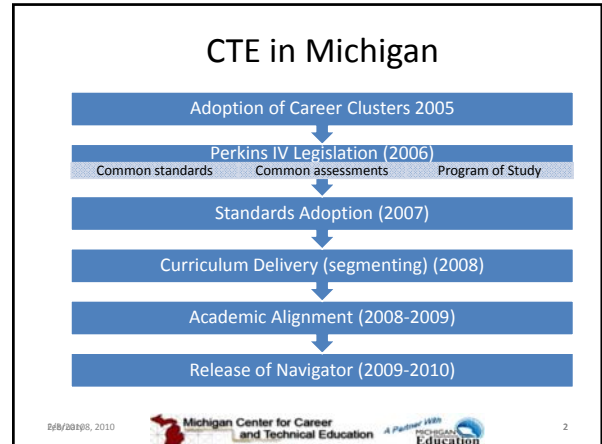




NAVIGATOR—CTE's New Electronic Portal

Michigan Career Conference
February 1, 2010


Michigan Center for Career and Technical Education
A Partner With

MI CTE NAVIGATOR




<http://navigator.mccte-fsu.org/>

February 8, 2010



Michigan Center for Career and Technical Education
A Partner With


Two Sites

Mccte-fsu.org



Navigator.mccte-fsu.org



February 8, 2010

Special Thanks To

- Dr. Steve Clark
- Kavan Story, ORA, Inc.
- Tina Koepf
- Kim Ducat
- Jan Vogel

Welcome Page

Login

Register

Public View

Building Name	City	Phone
Academy for Technology & Enterprise		
Adrian Senior High School		
Alpena Senior High School	Alpena	734.634.4200
Alpena Community High School	Alpena	
Alpena Community High School	Alpena	
Alpena County Area Technical & Education Center	Alpena	386.629.9333
Alpena High School	Alpena	
Alpena Park High School	Alpena	386.479.7100
Alpena Senior High School	Alpena	
Alpena High School	Alpena	

Michigan Center for Career and Technical Education

Home Schools MI Merit Programs Users Report

Welcome
Tina Keepf
= Edit Profile
= Log Out

Links
MCCTE-FSU
States' Career Clusters
OCTE Website

Areas
Mathematics
Science
Language Arts

Select Mathematics

February 8, 2010 Michigan Center for Career and Technical Education A Partner With MICHIGAN Education 13

Michigan Center for Career and Technical Education

Home Schools MI Merit Programs Help

Home > Areas > Mathematics

Login
E-Mail:
Password:
LOGIN REGISTER
Forgot your password?

Lists
Math 1 Course
Math 8 Drafts
Algebra I
Algebra 2
Geometry
Statistics and Probability
Precalculus

Links
MCCTE-FSU
States' Career Clusters
OCTE Website

Select Algebra I

February 8, 2010 Michigan Center for Career and Technical Education A Partner With MICHIGAN Education 14

MDE Content Expectations

↓

Algebra 1

Print Friendly version Export to Excel

L1	REASONING ABOUT NUMBERS, SYSTEMS, AND QUANTITATIVE SITUATIONS
L1.1	Number Systems and Number Sense
L1.1.1	Know the different properties that hold in different number systems and recognize that the applicable properties change in the transition from the positive integers to all integers, to the rational numbers, and to the real numbers.
L1.1.2	Explain why the multiplicative inverse of a number has the same sign as the number, while the additive inverse of a number has the opposite sign.
L1.1.3	Explain how the properties of associativity, commutativity, and distributivity, as well as identity and inverse elements, are used in arithmetic and algebraic calculations.
L1.1.4	Describe the reasons for the different effects of multiplication by, or exponentiation of, a positive number by a number less than 0, a number between 0 and 1, and a number greater than 1.
L1.1	Justify numerical relationships.
L1.2	Representations and Relationships
L1.2.1	Interpret representations that reflect absolute value relationships.
L1.2.4	Organize and summarize a data set in a table, plot, chart, or spreadsheet; find patterns in a display of data; understand and critique data displays in the media.
L2	CALCULATION, ALGORITHMS, AND ESTIMATION
L2.1	Calculation Using Real and Complex Numbers
L2.1.1	Explain the meaning and uses of weighted averages.

February 8, 2010 Michigan Center for Career and Technical Education A Partner With MICHIGAN Education 15

Michigan Center for Career and Technical Education

Home Schools MI Merit Programs Help

Home > Pathways

Login
E-Mail:
Password:
LOGIN REGISTER
Forgot your password?

Pathways
Art and Communications
Business, Management, Marketing, and Technology
Engineering/Manufacturing and Industrial Technology
Health Sciences
Human Services
Natural Resource and Agriculture

Links
MCCTE-FSU
States' Career Clusters
OCTE Website

Select Engineering/Mfg and Industrial Technology

February 8, 2010 Michigan Center for Career and Technical Education A Partner With MICHIGAN Education 16

Michigan Center for Career and Technical Education

Home Schools MI Merit Programs Help

Home > Pathways > Engineering/Manufacturing and Industrial Technology

Login
E-Mail:
Password:
LOGIN REGISTER
Forgot your password?

Links
MCCTE-FSU
States' Career Clusters
OCTE Website

Clusters
Architecture & Construction
Manufacturing
Transportation, Distribution & Logistics
Science, Technology, Engineering and Mathematics

Select Manufacturing

February 8, 2010 Michigan Center for Career and Technical Education A Partner With MICHIGAN Education 17

Michigan Center for Career and Technical Education

Home Schools MI Merit Programs Help

Home > Pathways > Engineering/Manufacturing and Industrial Technology > Manufacturing

Login
E-Mail:
Password:
LOGIN REGISTER
Forgot your password?

Programs
13.002P - Introductory Mechanical Technology
13.0412 - Industrial Production Technology/Technician
47.0102 - Electrical/Electronics Equipment Installation & Repair/General
47.0414 - Horse Management
48.0001 - Machine Tool Operator/Machine Shop
48.0209 - Welding, Brazing and Soldering
48.0701 - Woodworking General

Links
MCCTE-FSU
States' Career Clusters
OCTE Website

Select Machine Tool Operations

February 8, 2010 Michigan Center for Career and Technical Education A Partner With MICHIGAN Education 18

Michigan Center for Career and Technical Education

Home Schools MI Merit Programs Help

48.0501 - Machine Tool Operation/Machine Shop

Technical Standards

- Foundation Standards
- Pathway Standards
- Career & Employability Standards

Links

- MCCTE-FSU
- States' Career Clusters
- OCTE Website

February 8, 2010

Michigan Center for Career and Technical Education

Home Schools MI Merit Programs Help

48.0501 - Machine Tool Operation/Machine Shop

Technical Standards

I. National Institute for Metalworking Skills (NIMS) - Technical Skills

Back to List

Links

- MCCTE-FSU
- States' Career Clusters
- OCTE Website

February 8, 2010

Michigan Center for Career and Technical Education

Home Schools MI Merit Programs Help

48.0501 - Machine Tool Operation/Machine Shop

Technical Standards

I. National Institute for Metalworking Skills (NIMS) - Technical Skills

- A. Job Process Planning
- B. Job Execution
- C. Quality Control and Inspection
- D. Process Adjustment and Improvement
- E. General Maintenance
- F. Industrial Safety and Environmental Protection
- G. Career Management and Employment Relations
- H. Written and Oral Communication
- I. Mathematics
- J. Decision making and problem solving
- K. Social skills
- L. Engineering drawings and sketches
- M. Measurement
- N. Metalworking Theory
- O. Word address program codes

Back to List

Links

- MCCTE-FSU
- States' Career Clusters
- OCTE Website

February 8, 2010

Michigan Center for Career and Technical Education

Home Schools MI Merit Programs Help

48.0501 - Machine Tool Operation/Machine Shop

Technical Standards

I. National Institute for Metalworking Skills (NIMS) - Technical Skills

C. Quality Control and Inspection

- Develop an inspection plan an inspect simple parts using precision tools an techniques.
- Follow a sampling plan and inspect the samples for the require ata.

Back to List

Links

- MCCTE-FSU
- States' Career Clusters
- OCTE Website

February 8, 2010

Michigan Center for Career and Technical Education

Home Schools MI Merit Programs Help

48.0501 - Machine Tool Operation/Machine Shop

Technical Standards

I. National Institute for Metalworking Skills (NIMS) - Technical Skills

C. Quality Control and Inspection

- Develop an inspection plan an inspect simple parts using precision tools an techniques.

Segments

- Metalworking Theory

Back to List

Navigation

- Academic Alignment
- Mathematics
- Science
- Language Arts
- Support Material
- Pages
- Documents
- Presentations
- Lesson Plans

Links

- MCCTE-FSU
- States' Career Clusters
- OCTE Website

February 8, 2010

Michigan Center for Career and Technical Education

Home Schools MI Merit Programs Help

48.0501 - Machine Tool Operation/Machine Shop

Technical Standards

I. National Institute for Metalworking Skills (NIMS) - Technical Skills

C. Quality Control and Inspection

- Develop an inspection plan an inspect simple parts using precision tools an techniques.

Academic Alignment

Mathematics

Academic Alignment

- Math 7 Grade ALFO.07.12 Add, subtract, and multiply simple algebraic expressions of the first degree, e.g., $(3x + 5) + 2x + 4$, and apply using properties of real numbers.
- Math 7 Grade G.SA.07.21 Use a ruler and other tools to draw squares, rectangles, triangles, and parallelograms with specified dimensions.

Back to List

Navigation

- Academic Alignment
- Mathematics
- Science
- Language Arts
- Support Material
- Pages
- Documents
- Presentations
- Lesson Plans

Links

- MCCTE-FSU
- States' Career Clusters
- OCTE Website

February 8, 2010

Help Sitemap

Michigan Center for Career and Technical Education

Home Schools MI Merit Programs **Help**

Home > Sitemap

Login

E-Mail:
 Password:

 Forgot your password?

Links

MCCTE-FSU
 States' Career Clusters
 OCTE Website

Sitemap

- Home
- Schools
- MI Merit
 - Mathematics
 - Science
 - Language Arts
- Programs
- Contact Us

February 8, 2010 Michigan Center for Career and Technical Education A Partner With MICHIGAN Education 25

Levels of Users & Data

Program Administrators

CEPD Administrators

CTE Director/Building Administrators

MDE/OCTE State Consultants

District Curriculum Consultants

CTE Teachers

February 8, 2010 Michigan Center for Career and Technical Education A Partner With MICHIGAN Education 26

View Activation Status

Michigan Center for Career and Technical Education

Home Schools MI Merit Programs **Users** Reports Help

Home > Users > CEPD Administrators

Welcome

Users

Last Name	First Name	School	Email	Type	Active
Allen	Mary Kaye	Assenole High School	mary.kaye.allen@assnole.org	CEPD Administrator	No
Bergan	Paul	Benton Harbor High School	Paul.Bergan@BHS.org	CEPD Administrator	No
Balczyk	Halyia	Atlas Park High School	balczh@atlas.net	CEPD Administrator	No
Bensall	Paul	Coltsen Area Tech	pbensall@coltsen.org	CEPD Administrator	No
Brock	Clark	East Area High School	clbrock@eahs.net	CEPD Administrator	No
Buck	Gregory	C.O.D.A. ISD - Center for High School	gregory@codaschools.org	CEPD Administrator	No
Carpenter	Mike	Washtenaw Area Career	mcarpenter@washtenaw.edu	CEPD Administrator	No
Cox	David	Washtenaw Area Career	dc Cox@washtenaw.edu	CEPD Administrator	No
Douglas	Shawn	Capital Area Career	sdouglas@caparea.org	CEPD Administrator	No
Dunlap	Denise	Alma Senior High School	ddunlap@almsenior.org	CEPD Administrator	No
Dupont	Sandra	Conroe Area Career	sdupont@conroe.org	CEPD Administrator	No
Elli	Tony	Quincy High School	telli@quincy.org	CEPD Administrator	No
Fiorini	Shawn	Chippewa Area High School	sfiorini@cahsd.net	CEPD Administrator	No
Furbur	Jean	DeWitt Union School	jfurbur@dewittschools.org	CEPD Administrator	No

February 8, 2010 Michigan Center for Career and Technical Education A Partner With MICHIGAN Education 27

CEPD Administrator

Edit User Profile

First name: Dave
 Last name: Cox
 Job title: Director
 CEPD: 13
 School: Washtenaw Area Career Center
 Address1: 9001 East 13th Street
 Address2:
 City: Oakley
 State: Michigan
 Zip: 48061-9169
 Phone1: 231.876.2207
 Phone2:
 Fax: 231.876.2212

Email: dcox@washtenaw.edu
 Retype email: dcox@washtenaw.edu
 Recovery question: What is my CEPD?
 Recovery answer:
 User type: CEPD Administrator
 Supervisor: None Found
 Active: No

Schools

CEPD	Building Name	City	Phone	Remove
13	Washtenaw Area Career Center			

February 8, 2010 Michigan Center for Career and Technical Education A Partner With MICHIGAN Education 28

CEPD Administrator

Edit User Profile

First name: Sheila
 Last name: Durkin
 Job title: Director
 CEPD: 31
 School: Capital Area Career Center
 Address1: 2630 West Howell Road
 Address2:
 City: Mason
 State: Michigan
 Zip: 48854-9329
 Phone1: 517.244.4536
 Phone2:
 Fax: 517.676.3399

Email: sdurkin@caparea.org
 Retype email: sdurkin@caparea.org
 Recovery question: What is my CEPD?
 Recovery answer:
 User type: CEPD Administrator
 Supervisor: None Found
 Active: No

Schools

CEPD	Building Name	City	Phone	Remove
31	Capital Area Career Center			
31	Danville High School			
31	Eastern High School			
31	Everett High School			
31	Hill Center			
31	Hill Senior High School			
31	J.W. Scales High School			
31	Mason High School			
31	Webberville Middle/High School			
31	Williamston High School			

February 8, 2010 Michigan Center for Career and Technical Education A Partner With MICHIGAN Education 29

Building Administrator

Edit User Profile

First name: Mike
 Last name: Fung
 Job title: Career and Technical Education Director
 CEPD: 18
 School: Mt. Pleasant Senior High School
 Address1: 1155 S. Elizabeth St.
 Address2:
 City: Mt. Pleasant
 State: Michigan
 Zip: 48858
 Phone1: 989.775.2210
 Phone2: (989) 621-5379
 Fax: (989) 775-2215

Email: mfung@mtpleasant.edu.net
 Retype email: mfung@mtpleasant.edu.net
 Recovery question: What is my CEPD?
 Recovery answer:
 User type: Building Administrator
 Supervisor: Dunlap, Denise
 Active: No

Schools

CEPD	Building Name	City	Phone	Remove
18	Mt. Pleasant Senior High School			

February 8, 2010 Michigan Center for Career and Technical Education A Partner With MICHIGAN Education 30

Teacher Log in-Edit Profile

Edit My Profile

First name		Email	teacher1@eraii
Last name		Retype email	teacher1@eraii
Job title		Recovery question	Am I human?
CEPD	09	Recovery answer	teacher1@eraii
School	Lamphere High School	Old password	****
Address1		New Password	
Address2		Retype password	
City		User type	Teacher
State	Michigan	Supervisor/Teacher	Alexander, M.
Zip			
Phone1			
Phone2			
Fax			

February 6, 2010 Michigan Center for Career and Technical Education A Partner With MICHIGAN Education 31

School

Schools MI Merit Programs Users Reports

Home > Reports > Curriculum Standards

School

CEPD: 29
 Name: Lamphere High School
 Address1:
 Address2:
 City:
 State:
 Zip:
 Phone:
 Fax:
 Webpage:
 Email:

Programs

CIP	Name
310.0202	Radio, B. TV Broadcasting Technology
15.1301	Drafting & Design Technology
52.0299	Business Administration, Management & Operations
52.0800	Financial & Financial Management Services
52.2399	Marketing, Sales & Services/ Marketing & Entrepreneurship

February 8, 2010 Michigan Center for Career and Technical Education A Partner With MICHIGAN Education 32

Michigan Center for Career and Technical Education

Home Schools MI Merit Programs Users Reports Help

Home > Reports

Welcome

Tina Koepf
 Edit Profile
 Log Out

Links

MCCTE-FSU
 States' Career Clusters
 OCTE Website

Reports

Curriculum Standards
 State
 PSN
 Teacher

Segments
 State
 PSN
 Teacher

Academic Alignment
 State
 PSN
 Teacher

February 8, 2010 Michigan Center for Career and Technical Education A Partner With MICHIGAN Education 33

Michigan Center for Career and Technical Education

Home Schools MI Merit Programs Users Reports Help

Home > Reports > Curriculum Standards

Curriculum Standards Report

Program: 01.0000 - Agriculture, Agriculture Operations and Related Sciences

List: All

Level 1 - Knowledge
 Level 2 - Skills
 Level 3 - Performance Elements

Show level 1 - knowledge
 Show level 2 - skills
 Show level 3 - performance elements
 Show level 4 - measurement criteria

February 8, 2010 Michigan Center for Career and Technical Education A Partner With MICHIGAN Education 34

Reports – Curriculum Standard Lists

Curriculum Standards Report

Program: 01.0000 - Agriculture, Agriculture Operations and Related Sciences

List: All

Level 1 - Knowledge
 Level 2 - Skills
 Level 3 - Performance Elements

Show level 1 - knowledge
 Show level 2 - skills
 Show level 3 - performance elements
 Show level 4 - measurement criteria

01.0000 - Agriculture, Agriculture Operations and Related Sciences

- Technical Standards
- Foundation Standards
- Pathway Standards
- Career & Employability Standards

February 8, 2010 Michigan Center for Career and Technical Education A Partner With MICHIGAN Education 35

Reports – Curriculum Standard Levels

Curriculum Standards Report

Program: 01.0000 - Agriculture, Agriculture Operations and Related Sciences

List: All

Level 1 - Knowledge
 Level 2 - Skills
 Level 3 - Performance Elements

Show level 1 - knowledge
 Show level 2 - skills
 Show level 3 - performance elements
 Show level 4 - measurement criteria

February 8, 2010 Michigan Center for Career and Technical Education A Partner With MICHIGAN Education 36

Programs, My Programs

My Programs

CIP	Name	PSN
10.0202	Radio & TV Broadcasting Technology	18592

February 8, 2010

Programs, My Programs

Home > Pathways > Arts and Communication test > Arts, A/V Technology & Communication > Rad

Welcome

- Edit Profile
- Log Out

10.0202 - Radio & TV Broad

- ▣ Foundation Skills
- ▣ MI Career and Employability Skill
- ▣ Pathway Skills
- ▣ Technical Skills

List Selection

State
PSN 18592
School

February 8, 2010

Programs, My Programs

Home > Pathways > Arts and Communication test > Arts, A/V Technology & Communication > Rad

Welcome

- Edit Profile
- Log Out

10.0202 - Radio & TV Broad

- ▣ Foundation Skills
- ▣ MI Career and Employability Skill
- ▣ Pathway Skills
- ▣ Technical Skills

List Selection

State
PSN 18592
School
Teacher A
Teacher B

February 8, 2010

Programs, My Programs

10.0202 - Radio & TV Broadcasting Techno

Technical Skills

I. Massachusetts -Radio and TV Broadcasting

A. Organizational Skills

1. Describe duties of production personnel

a. _____

b. _____

Segments

1 Employment	State
5 Theory I	State
0. Pre	<input type="checkbox"/> Add

Back to List

February 8, 2010

Programs, My Programs

10.0202 - Radio & TV Broadcasting Techno

Technical Skills

I. Massachusetts -Radio and TV Broadcasting

A. Organizational Skills

1. Describe duties of production personnel

a. _____

b. _____

Segments

0 Pre	Class
1 Employment	State
5 Theory I	State
2 Leadership and Employability Skills	<input checked="" type="checkbox"/> Add
<ul style="list-style-type: none"> 3.1 Media's Effect on Society 4. Emerging Technology 8. Theory II 7. PreProduction I 9. PreProduction II 10. Production I 11. Production II 11. Post Production I 12. Post Production II 13. Post 	

February 8, 2010

Programs, My Programs

Home > Pathways > Arts and Communication test > Arts, A/V Technology & Communication > Rad

Segments

- Academic Alignment
- Mathematics
- Science
- Language Arts
- Support Material
- Images
- Documents
- Presentations
- Lesson Plans

10.0202 - Radio & TV Broadcasting Techno

Technical Skills

I. Massachusetts -Radio and TV Broadcasting

A. Organizational Skills

1. Describe duties of production personnel

a. _____

b. _____

Segments

0 Pre	Class
1 Employment	State
5 Theory I	State
2 Leadership and Employability Skills	<input checked="" type="checkbox"/> Add

Back to List

List Selection

State
PSN 18592
School
Teacher A
Teacher B

February 8, 2010

Programs, My Programs – Lesson Plans

Navigation

- Segments
- Academic Alignment
- Mathematics
- Science
- Language Arts
- Support Material
- Images
- Documents
- Presentations
- Lesson Plans

ist Selection

- State
- PSN 18592
- School

1. Describe duties of production personnel

test

Objective

Introduction

Content Presentation

Content Application

Summary Evaluation

Comments/Hints

Safety Concerns

Tools and Equipment

Resources

February 8, 2010 Michigan Center for Career and Technical Education A Partner 1889 MICHIGAN EDUCATION 49

Programs, My Programs

Navigation

- Segments
- Academic Alignment
- Mathematics
- Science
- Language Arts
- Support Material
- Images
- Documents
- Presentations
- Lesson Plans

ist Selection

- State

1. Describe duties of production personnel

a. _____

Presentations

test

Click on ar

Upload Presentation

Back to List

February 8, 2010 Michigan Center for Career and Technical Education A Partner 1889 MICHIGAN EDUCATION 50

Programs, My Programs

Navigation

- Segments
- Academic Alignment
- Mathematics
- Science
- Language Arts
- Support Material
- Images
- Documents
- Presentations
- Lesson Plans

ist Selection

- State
- PSN 18592
- School
- Teacher A
- Teacher B

A. Organizational Skills

1. Describe duties of production personnel

a. _____

Images

Click on an image to view a larger version

February 8, 2010 Michigan Center for Career and Technical Education A Partner 1889 MICHIGAN EDUCATION 51

Michigan Center for Career and Technical Education

Home Schools MI Merit Programs Users Reports Help

Home > Reports

Welcome

Tina Koepf

- Edit Profile
- Log Out

Links

- MCCTE-FSU
- States' Career Clusters
- OCTE Website

Reports

Curriculum Standards

- State
- PSN
- Teacher

Segments

- State
- PSN
- Teacher

Academic Alignment

- State
- PSN
- Teacher

February 8, 2010 Michigan Center for Career and Technical Education A Partner 1889 MICHIGAN EDUCATION 52

Michigan Center for Career and Technical Education

Home Schools MI Merit Programs Users Reports Help

Home > Reports

Welcome

Tina Koepf

- Edit Profile
- Log Out

Links

- MCCTE-FSU
- States' Career Clusters
- OCTE Website

Reports

Curriculum Standards

- State
- PSN
- Teacher

Segments

- State
- PSN
- Teacher

Academic Alignment

- State
- PSN
- Teacher

February 8, 2010 Michigan Center for Career and Technical Education A Partner 1889 MICHIGAN EDUCATION 53

Segment Report

Segments Report

Program: 10.0202 - Radio & TV Broadcasting Technology

List: All

Level 1 - Knowledge

Level 2 - Skills

Level 3 - Performance Elements

1. Select Segment

- Segment 0 - Pre
- Segment 1 - Scientific and Social Implications
- Segment 2 - Leadership, Business Education & Career Success
- Segment 3 - Organization of Living Systems
- Segment 4 - Animal Industries and Domestic Animal Production
- Segment 5 - Comparative Animal Systems and Animal Genetics
- Segment 6 - Animal Health and Nutrition
- Segment 7 - Plant Physiology
- Segment 8 - Plant Nutrition
- Segment 9 - Pests and Pest Management
- Segment 10 - Soils
- Segment 11 - Environmental and Energy Systems
- Segment 12 - Natural Resources Fundamentals
- Segment 13 - Post

Check All / Uncheck All

Show Level 4 - measurement criteria Show math Show science Show language arts

2. Select Level and Academic

Generate

February 8, 2010 Michigan Center for Career and Technical Education A Partner 1889 MICHIGAN EDUCATION 54

Segments Report

Program: 10.0202 - Radio & TV Broadcasting Technology

List: #

Level 1 - Knowledge

Level 2 - Skills

Level 3 - Performance Elements

Segment 0 - Pre

Segment 1 - Employment

Segment 2 - Leadership and Employability Skills

Segment 3 - Media's Effect on Society

Segment 4 - Emerging Technology

Segment 5 - Theory I

Segment 6 - Theory II

Segment 7 - Pre-Production I

Segment 8 - Pre-Production II

Segment 9 - Production I

Segment 10 - Production II

Segment 11 - Post Production I

Segment 12 - Post Production II

Segment 13 - Post

Check All / Uncheck All

Show Level 4 - measurement criteria Show math Show science Show language arts

Generate

February 8, 2010 Michigan Center for Career and Technical Education A Partner With MICHIGAN Education 55

Print friendly version Export to Excel

10.0202 - Radio & TV Broadcasting Technology

Technical Standards

I. Massachusetts - Radio and TV Broadcasting		S
A. Organizational Skills		S
1. Describe duties of production personnel		X
5. Analyze the objective of production activities		X
Lang Arts CE 4.2.4.	Understand the appropriate uses and implications of casual or informal versus professional language; understand, as well, the implications of language designed to control others and the detrimental effects of its use on targeted individuals or groups.	State
Lang Arts CE 3.4.3.	Understand the ways people use media in their personal and public lives.	State
Lang Arts CE 1.2.4.	Assess strengths, weaknesses, and development as a writer by examining a collection of own writing.	State
Lang Arts CE 1.1.5.	Revise drafts to more fully and/or precisely convey meaning—drawing on responses from others, self-reflection, and reading one's own work with the eye of a reader; then refine the text—selecting and/or reorganizing ideas, and addressing potential readers' questions.	State
Lang Arts CE 4.2.5.	Recognize language bias in one's community, school, textbooks, the public press, and in one's own use of language.	State
Lang Arts CE 3.4.4.	Understand how the commercial and political purposes of producers and publishers influence not only the nature of advertisements and the selection of media content, but the slant of news articles in newspapers, magazines, and the visual media.	State
Lang Arts CE 3.1.7.	Analyze and evaluate the portrayal of various groups, societies, and cultures in literature and other texts.	State
Lang Arts CE 3.1.5.	Analyze and evaluate the components of multiple organizational patterns.	State
Lang Arts CE 1.4.3.	Develop and refine a position, claim, thesis, or hypothesis that will be explored and supported by analyzing different perspectives, resolving inconsistencies, and writing about those differences in a structure appropriate for the audience.	State

February 8, 2010 Michigan Center for Career and Technical Education A Partner With MICHIGAN Education 56

Michigan Center for Career and Technical Education

Home Schools MI Merit Programs Users Reports Help

Home > Reports

Welcome

Tina Koepf

» Edit Profile

» Log Out

Links

MCCTE-FSU

States' Career Clusters

OCTE Website

Reports

Curriculum Standards

- » State
- » PSN
- » Teacher

Segments

- » State
- » PSN
- » Teacher

Academic Alignment

- » State
- » PSN
- » Teacher

Academic Alignment Report

February 8, 2010 Michigan Center for Career and Technical Education A Partner With MICHIGAN Education 57

State Lists for Academic Alignment

Michigan Center for Career and Technical Education

Home About Programs Publications Resources Key Issues

August 2, 2009, 2:18 pm

Michigan Center for Career and Technical Education

Home MCCTE

Curriculum Standards Project

Career Clusters to Michigan CTE Program

View Curriculum Standards

Gap Analysis and Segmenting Documents

Academic Alignment Documents

Upcoming Events

OCTE Teacher Academy

James B. Harvey Center

Lansing MI

Aug 4, 2009 to Aug 5, 2009

Submit a new event

February 8, 2010 Michigan Center for Career and Technical Education A Partner With MICHIGAN Education 58

CIP Code with Academic Content

MICHIGAN Program CIP	First Academic Alignment		Second Academic Alignment			
	Date of First Academic Approval	First Academic Approval	Volume Complex	Technical Academic Approval	Final Academic Approval	Volume Complex
ARTS AND COMMUNICATIONS PATHWAY						
Art & Communication						
10.0202 Radio & TV Broadcasting	9/10a	10a	9.5a	9.5a	10a	9.5a
11.0101 Graphic & Printing Technology & Communications	9/10a	10a	9.5a	9.5a	10a	9.5a
10.0101 Visual & Performing Arts	9/10a	10a	9.5a	9.5a	10a	9.5a
BUSINESS MANAGEMENT, MARKETING & TECH PATHWAY						
Business Technology						
11.0101 Computer Systems Technology & Telecommunications	9/10a	10a	9.5a	9.5a	10a	9.5a
11.0201 Service Administration/Management	9/10a	10a	9.5a	9.5a	10a	9.5a
11.0101 Digital Multimedia & Information Services Design	9/10a	10a	9.5a	9.5a	10a	9.5a
11.0101 Computer Programming/Programmer	9/10a	10a	9.5a	9.5a	10a	9.5a

February 8, 2010 Michigan Center for Career and Technical Education A Partner With MICHIGAN Education 59

Reports / Academic Alignment / State

Academic Alignment Report

Program: 10.0202 - Radio & TV Broadcasting Technology

List: Technical Skills

Level 1 - Knowledge

Level 2 - Skills

Level 3 - Performance Elements

Show Level 4 - measurement criteria Show math Show science Show language arts

Generate

February 8, 2010 Michigan Center for Career and Technical Education A Partner With MICHIGAN Education 60

Academic Alignment Report

Program: 10.0202 - Radio & TV Broadcasting Technology

List: All

Level 1 - Knowledge

Level 2 - Skills

Level 3 - Performance Elements

Show Level 4 - measurement criteria Show math Show science Show language arts

Print friendly version | Export to Excel

10.0202 - Radio & TV Broadcasting Technology

Technical Standards

I. Massachusetts - Radio and TV Broadcasting

A. Organizational Skills

1. Describe duties of production personnel

2. Write a production treatment/plan for various types of programs

Lang Arts/CE 4.2.4 Understand the appropriate uses and implications of casual or informal versus professional language; understand, as well, the implications of language designed to control others and the detrimental effects of its use on targeted individuals or groups.

Lang Arts/CE 3.4.2 Understand the ways people use media in their personal and public lives.

Lang Arts/CE 1.1.5 Revise drafts to more fully and/or precisely convey meaning—drawing on responses from others, self-reflection, and reading one's own work with the eye of a reader; then refine the text—deleting and/or reorganizing ideas, and addressing potential readers' questions.

February 8, 2010 Michigan Center for Career and Technical Education 61

Academic Alignment within PSN/CPED

Academic Alignment Report

Program: 10.0202 - Radio & TV Broadcasting Technology

PSN: 17435 - Hazel Park High School

List: 17437 - Lake Orion Community High School

Level 1 - Knowledge: 17784 - Royal Oak High School, 17888 - Orford High School

Level 2 - Skills: 18528 - West Bloomfield High School, 18552 - Lamphere High School

Level 3 - Performance Elements: 18908 - Southfield High School, 18930 - Southfield High School

Show Level 4 - measurement criteria Show math Show science Show language arts

February 8, 2010 Michigan Center for Career and Technical Education 62

Perform New Academic Alignment

Welcome
Adam Wooley
• Edit Profile
• Log Out

List Selection
State
PSN 18592
School
Macknis, Michael
• Wooley, Adam

10.0202 - Radio & TV Broadcasting Technology

Technical Skills

I. Massachusetts - Radio and TV Broadcasting

A. Organizational Skills

1. Describe duties of production personnel
2. Write a production treatment/plan for various typ
3. Write a production script
4. Design a production in the stages of pre-producti
5. Analyze the objective of production activities

February 8, 2010 Michigan Center for Career and Technical Education 63

Academic Alignment

Welcome
Adam Wooley
• Edit Profile
• Log Out

Navigation
• Segments
Academic Alignment
Mathematics
Science
Language Arts
Support Material
Images
Documents
Presentations
Lesson Plans

10.0202 - Radio & TV Broadcasting T

Technical Skills

I. Massachusetts -Radio and TV Broadcasting

A. Organizational Skills

4. Design a production in the stages of pre-production production

Back to List

February 8, 2010 Michigan Center for Career and Technical Education 64

Academic Alignment

10.0202 - Radio & TV Broadcasting Techn

Technical Skills

I. Massachusetts -Radio and TV Broadcasting

A. Organizational Skills

4. Design a production in the stages of pre-production, produc

Area:

List:

Keywords: Design a production in the stages of c

Statistics and Probability

8.0 ASSESSING ASSUMPTIONS OF STATISTICAL MODELS

8B Assessing Assumptions of Statistical Models

8B.2 In the context of specific studies, recognize aspects of study design that either support or offer evidence against required assumptions.

Back to Skill

February 8, 2010 Michigan Center for Career and Technical Education 65

Academic Alignment

Statistics and Probability

8.0 ASSESSING ASSUMPTIONS OF STATISTICAL MODELS

8B Assessing Assumptions of Statistical Models

8B.2 In the context of specific studies, recognize aspects of study design that either support or offer evidence against required assumptions.

Back to Skill

February 8, 2010 Michigan Center for Career and Technical Education 66

Academic Alignment

2.	Write a production treatment/plan for various types of programs.	Sta
3.	Write a production script.	Sta
4.	Design a production in the stages of pre-production, production, and post-production.	Sta
	Math.2.2 In the context of specific studies, recognize aspect study design that either support or offer evidence required assumptions.	
5.	Analyze the objective of production activities.	Sta
6.	Manage crew and cast required for an audio/video production.	Sta

February 8, 2010

Michigan Center for Career and Technical Education 67

Tutorials Available

February 8, 2010

Michigan Center for Career and Technical Education 68

www.navigators.mccte-fsu.org

February 8, 2010

Michigan Center for Career and Technical Education 69

IF YOU HAVE QUESTIONS REGARDING THIS TUTORIAL CONTACT:

Michigan Center for Career and Technical Education

Email: mccte@ferris.edu

February 8, 2010

Michigan Center for Career and Technical Education 70